



**COLLEZIONE TAPPETI**  
RUGS COLLECTION

*Colorati / Colours*



**COLORATI**

Horsy Solid Colour

**Caratteristiche** / Characteristics

Taglia:  
5.00 / 5.50 mq  
Spessore:  
1.4 / 1.6 mm  
Pieno fiore-anilina pura  
Pelli naturali solo tinte in botte  
I colori ROSSO e derivati possono perdere colore  
IL BIANCO è l'unico colore che non può essere tinto, quindi non sarà mai un bianco ottico bensì un bianco sporco

Size:  
5.00 / 5.50 mq  
Thickness:  
1.4 / 1.6 mm  
Pure anyline full grain  
Natural hides only dyed in the drum  
RED colours and derivates could loose colour  
WHITE colour is the only one we cannot dye, it will be never an optical white it is an off-white

**Colori disponibili** / Colours available





## COLORATI

# Horsy Van Gogh

### Caratteristiche / Characteristics

Taglia:  
5.00 / 5.50 mq

Spessore:  
1.4 / 1.6 mm

Pieno fiore-anilina pura

L'asportazione del pelo viene eseguita manualmente, quindi ogni pelle sarà diversa dall'altra per quel che concerne il look

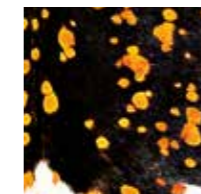
Size:  
5.00 / 5.50 mq

Thickness:  
1.4 / 1.6 mm

Pure anyline full grain

The hair is removed by hand so each skin will have a unique look from the other

### Colori disponibili / Colours available



Safari



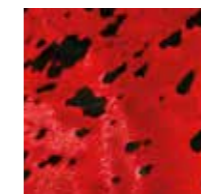
Vulcano



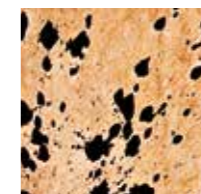
Mint



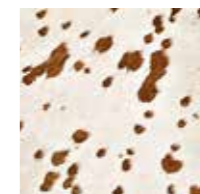
Black-Black



Red-Black



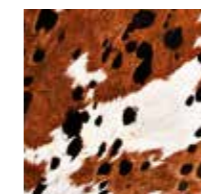
Spiga-Mokka



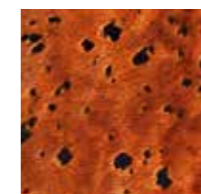
White-Beige



White-Mokka



Lyon



Baio-Mokka



## COLORATI

# Horsy Prince

### Caratteristiche / Characteristics

Taglia:  
5.00 / 5.50 mq  
Spessore:  
1.4 / 1.6 mm

Pieno fiore-anilina pura  
L'asportazione del pelo viene eseguita manualmente, quindi ogni pelle sarà diversa dall'altra per quel che concerne il look, la laminatura può comunque rimanere parzialmente anche sul pelo

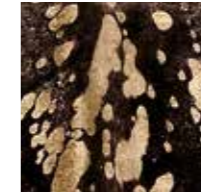
Size:  
5.00 / 5.50 mq  
Thickness:  
1.4 / 1.6 mm

Pure anyline full grain  
The hair is removed by hand so each skin will have a unique look.  
The foil could stay a little bit on hair on it is something we cannot control

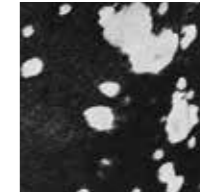
### Colori disponibili / Colours available



Black-Gold



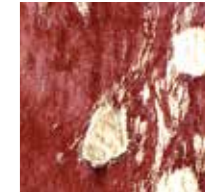
Mokka-Bronze



Black-Silver



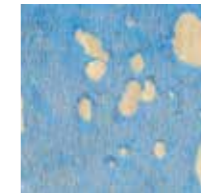
Melanzana-Prugna



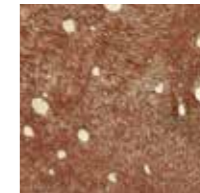
Cardinale-Gold



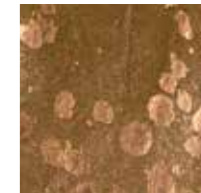
Chartreuse-Silver



Babyblue-Gold



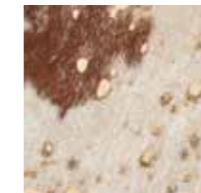
Baio-Gold



Muschio-Bronze



Spiga-Gold



Lyon-Gold



White-Gold



White-Bronze



White-Silver



White-Ologram



## COLORATI

# Horsy Corrosion

### Caratteristiche / Characteristics

Taglia:  
5.00 / 5.50 mq

Spessore:  
1.4 / 1.6 mm

Pieno fiore-anilina pura

Pelo effetto due toni, colore ottenuto  
tramite lavorazione manuale  
della pelle quindi possibili nuance  
diverse di colore da pelle a pelle  
e nella stessa pelle

Size:  
5.00 / 5.50 mq

Thickness:  
1.4 / 1.6 mm

Pure anyline full grain

Skins with two-tones effect madden  
by hand, so there will be different shades  
of colour on the same hide and from  
one skin to the other

### Colori disponibili / Colours available



Gin Lemon



Campari



Negroni



Pina Colada



Irish Coffee



Caipiroska



Margarita



Bloody Mary



Barracuda



Mojito



Gin Tonic



Curacao



## COLORATI

# Horsy Contrast

### Caratteristiche / Characteristics

Taglia:  
5.00 / 5.50 mq  
Spessore:  
1.4 / 1.6 mm  
Pieno fiore-anilina pura  
Effetto bicolore ottenuto solamente  
tramite tinture anilina in botte e solo  
con pelo lungo naturale

Size:  
5.00 / 5.50 mq  
Thickness:  
1.4 / 1.6 mm  
Pure anyline full grain  
The two-tone effect is done trough  
natural anyline dyeing in the drum and  
only with natural long hair

### Colori disponibili / Colours available





**Vicenza Pelli**

MADE IN ITALY

**Conceria S. Biagio srl**

Sede operativa/Headquarters: Via Segala, 21 · I · 36050 Zermeghedo (VI)

Sede legale/Registered office: Via Arzignano, 156-158/A · I · 36072 Chiampo (VI)

**T** +39 0444 420456 · **F** +39 0444 420458

**E** vicpelli@tin.it · [www.vicenzapelli.com](http://www.vicenzapelli.com)